

For Sale

City Commercial Real Estate

Asking \$399,000



501 East Main Street, Waukesha 120' Tunnel-Type Car Wash in Main Thoroughfare

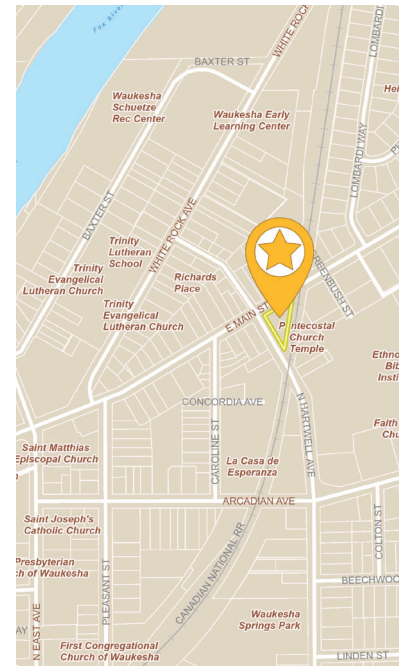
GENERAL INFORMATION

This well-established car wash in the heart of Waukesha has been under current ownership since 1987. Capable of cleaning 50+ cars per hour, the property has a lower level for mechanicals, rubber and metal roof, and a large bay for car detailing. Building has 600 amps / 480 volts.

PARCEL SIZE:	approx. 0.33 acres
YEAR BUILT:	1960s (renovated & expanded in early 2006)
KEY FEATURES:	- VFD system - Hydronic system - 6 vacuum stations - Sonny log-chain track - Water treatment system - Can clean 50+ cars/hour
ZONING:	B-3 (General Business)
ASSESSED VALUE:	\$296,600
2022 TAXES:	\$5,939.47
TAX KEY:	WAKC1302051

CONTACT INFORMATION

Brian Starr
C: 414.324.9207
O: 414.223.4000
bstarr@citycommercialre.com



POPULATION

1 mile	15,575
3 mile	65,397

AVERAGE H.H. INCOME

1 mile	\$65,310
3 mile	\$81,623

TRAFFIC COUNTS

8,010VPD	(Main Street)
4,080VPD	(Hartwell Ave.)

All prices are subject to change. Information is deemed reliable, however no warranty or representation is made to the accuracy and should be verified.

Additional Photos



Car wash entrance on Hartwell (faces south)
Detailing bay door on left, car wash door on right.



Car wash exit on Main (faces north)
Exit is heated to prevent ice build up in winter.

Mechanicals



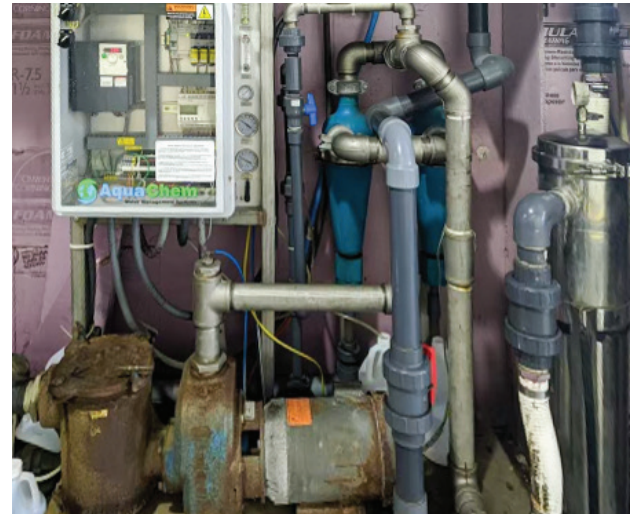
Track & Hydronic System

This car wash features a durable Sonny log-chain track system. Water is heated in the basement boiler and then carried via hydronic system to exit area, preventing ice from forming in freezing temperatures.



VFD Control System

The Variable Frequency Drive system is a motor control system that manages the ramp-up and ramp-down of motors during stop and start. It varies the frequency and voltage of the electric motor that drives the car wash.



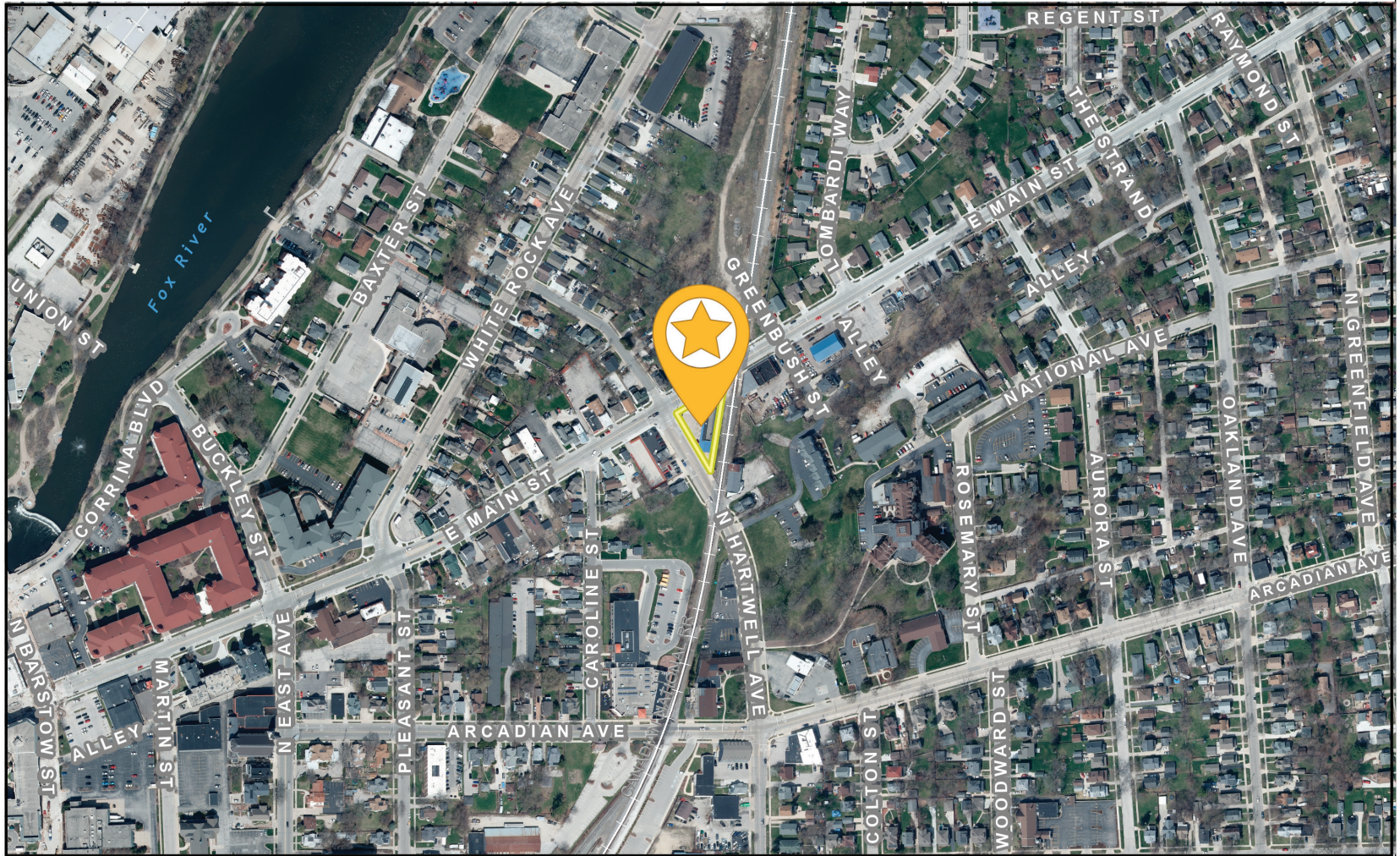
Water Treatment System

The installation of this water treatment system **keeps water and sewer bills significantly lower.** Three large capacity tanks in the basement treat all water before it is pumped up to three more large tanks (RO units) on the first floor. All customer vehicles are cleaned using this treated water.



LAND INFORMATION SYSTEMS DIVISION

501 E. Main Street



0 374.74 Feet



The information and depictions herein are for informational purposes and Waukesha County specifically disclaims accuracy in this reproduction and specifically admonishes and advises that if specific and precise accuracy is required, the same should be determined by procurement of certified maps, surveys, plats, Flood Insurance Studies, or other official means. Waukesha County will not be responsible for any damages which result from third party use of the information and depictions herein, or for use which ignores this warning.

Notes:

Printed: 2/16/2022



DISCLOSURE TO NON-RESIDENTIAL CUSTOMERS

1 Prior to negotiating on your behalf the brokerage firm, or an agent associated with the firm, must provide you the
2 following disclosure statement:

3 **DISCLOSURE TO CUSTOMERS** You are a customer of the brokerage firm (hereinafter Firm). The Firm is either an agent
4 of another party in the transaction or a subagent of another firm that is the agent of another party in the transaction. A
5 broker or a salesperson acting on behalf of the Firm may provide brokerage services to you. Whenever the Firm is
6 providing brokerage services to you, the Firm and its brokers and salespersons (hereinafter Agents) owe you, the
7 customer, the following duties:

- 8 (a) The duty to provide brokerage services to you fairly and honestly.
- 9 (b) The duty to exercise reasonable skill and care in providing brokerage services to you.
- 10 (c) The duty to provide you with accurate information about market conditions within a reasonable time if you request
11 it, unless disclosure of the information is prohibited by law.
- 12 (d) The duty to disclose to you in writing certain Material Adverse Facts about a property, unless disclosure of the
13 information is prohibited by law (see lines 42-51).
- 14 (e) The duty to protect your confidentiality. Unless the law requires it, the Firm and its Agents will not disclose your
15 confidential information or the confidential information of other parties (see lines 23-41).
- 16 (f) The duty to safeguard trust funds and other property held by the Firm or its Agents.
- 17 (g) The duty, when negotiating, to present contract proposals in an objective and unbiased manner and disclose the
18 advantages and disadvantages of the proposals.

19 Please review this information carefully. An Agent of the Firm can answer your questions about brokerage services,
20 but if you need legal advice, tax advice, or a professional home inspection, contact an attorney, tax advisor, or home
21 inspector. This disclosure is required by section 452.135 of the Wisconsin statutes and is for information only. It is a
22 plain-language summary of the duties owed to a customer under section 452.133(1) of the Wisconsin statutes.

23 **CONFIDENTIALITY NOTICE TO CUSTOMERS** The Firm and its Agents will keep confidential any information given to the
24 Firm or its Agents in confidence, or any information obtained by the Firm and its Agents that a reasonable person
25 would want to be kept confidential, unless the information must be disclosed by law or you authorize the Firm to
26 disclose particular information. The Firm and its Agents shall continue to keep the information confidential after the
27 Firm is no longer providing brokerage services to you.

28 The following information is required to be disclosed by law:

- 29 1. Material Adverse Facts, as defined in Wis. Stat. § 452.01(5g) (see lines 42-51).
- 30 2. Any facts known by the Firm or its Agents that contradict any information included in a written inspection
31 report on the property or real estate that is the subject of the transaction.

32 To ensure that the Firm and its Agents are aware of what specific information you consider confidential, you may
33 list that information below (see lines 35-41) or provide that information to the Firm or its Agents by other means. At a
34 later time, you may also provide the Firm or its Agents with other Information you consider to be confidential.

35 **CONFIDENTIAL INFORMATION:** _____
36 _____
37 _____

38 **NON-CONFIDENTIAL INFORMATION** (the following information may be disclosed by the Firm and its Agents): _____
39 _____
40 _____
41 _____ (Insert information you authorize to be disclosed, such as financial qualification information.)

42 **DEFINITION OF MATERIAL ADVERSE FACTS**
43 A "Material Adverse Fact" is defined in Wis. Stat. § 452.01(5g) as an Adverse Fact that a party indicates is of such
44 significance, or that is generally recognized by a competent licensee as being of such significance to a reasonable
45 party, that it affects or would affect the party's decision to enter into a contract or agreement concerning a transaction
46 or affects or would affect the party's decision about the terms of such a contract or agreement.

47 An "Adverse Fact" is defined in Wis. Stat. § 452.01(1e) as a condition or occurrence that a competent licensee
48 generally recognizes will significantly and adversely affect the value of the property, significantly reduce the structural
49 integrity of improvements to real estate, or present a significant health risk to occupants of the property; or information
50 that indicates that a party to a transaction is not able to or does not intend to meet his or her obligations under a
51 contract or agreement made concerning the transaction.

52 **NOTICE ABOUT SEX OFFENDER REGISTRY** You may obtain information about the sex offender registry and persons
53 registered with the registry by contacting the Wisconsin Department of Corrections on the Internet at
54 <http://www.doc.wi.gov> or by telephone at 608-240-5830.

No representation is made as to the legal validity of any provision or the adequacy of any provision in any specific transaction.
Copyright © 2016 by Wisconsin REALTORS® Association Drafted by Attorney Debra Peterson Conrad